



Power meter module

Analog 4 channel supply power meter

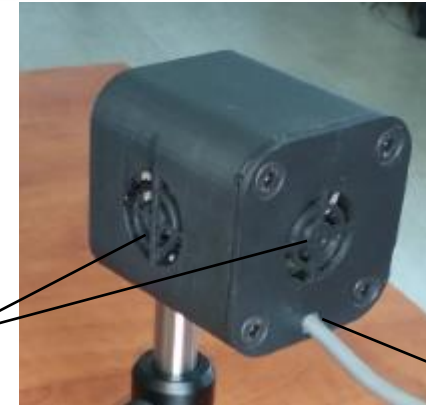
Technical menu



- Detector face
- Thermo-optical input
- Active area $\text{\O}15\text{ mm}$
- Wavelength range $200\text{ nm} - 15\text{ }\mu\text{m}$



Thread # 8-32



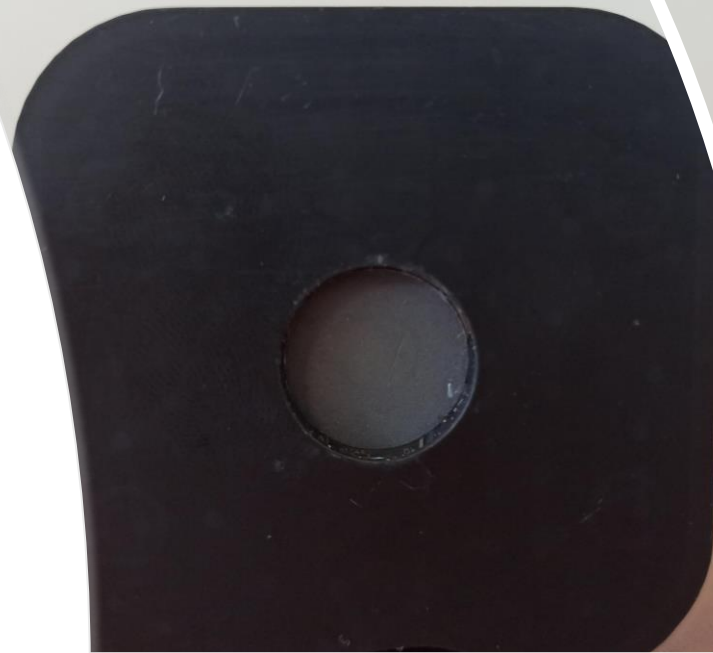
Cooling airflow entrance

4 multi-wire:

- V_{in} 12-24 [V]
- GND
- V_{out} (Analog)
- V_{ref} (Analog)

Multi channel power meter:

- Thermal power meter module, receive thermal energy by insert radiation source, and cast it to a voltage value.
 - Analog 4 channel supply power to the power meter and read data from the output.
 - The only required connection is an USB from analog 4 channel to PC.
- * There is a option to connect 4 power meters, and read their data simultaneously (comparison, calibration)



Amp state #	Amp binary state	Reputation pulse [Hz]	Pulse energy [J]	Power [Watt]	Signal voltage [v] (broken fiber)	Reputation pulse [Hz]	Pulse energy [J]	Power [Watt]	Signal voltage [v] (broken fiber)	Reputation pulse [Hz]	Pulse energy [J]	Power [Watt]	Signal voltage [v] (broken fiber)
0	000000	10	0.2	2	0	3	0.7	2.1	0.007	20	0.2	4	0.009
0	000000	10	0.4	4	0.005	3	1.4	4.2	0.017	20	0.4	8	0.18
0	000000	10	0.8	8	0.016	3	1.8	5.4	0.024	20	0.6	12	0.025
0	000000	10	1	10	0.021	3	3.5	10.5	0.051	20	0.8	16	0.034
1	000001	10	0.2	2	0.012	3	0.7	2.1	0.041	20	0.2	4	0.045
1	000001	10	0.4	4	0.03	3	1.4	4.2	0.07	20	0.4	8	0.09
1	000001	10	0.8	8	0.077	3	1.8	5.4	0.095	20	0.6	12	0.112
1	000001	10	1	10	0.085	3	3.5	10.5	0.25	20	0.8	16	0.142
2	000011	10	0.2	2	0.036	3	0.7	2.1	0.085	20	0.2	4	0.084
2	000011	10	0.4	4	0.07	3	1.4	4.2	0.142	20	0.4	8	0.157
2	000011	10	0.8	8	0.15	3	1.8	5.4	0.212	20	0.6	12	0.231
2	000011	10	1	10	0.186	3	3.5	10.5	0.42	20	0.8	16	0.267
3	000111	10	0.2	2	0.084	3	0.7	2.1	0.197	20	0.2	4	0.167
3	000111	10	0.4	4	0.172	3	1.4	4.2	0.362	20	0.4	8	0.338
3	000111	10	0.8	8	0.32	3	1.8	5.4	0.445	20	0.6	12	0.485
3	000111	10	1	10	0.365	3	3.5	10.5	1	20	0.8	16	0.592
4	001111	10	0.2	2	0.18	3	0.7	2.1	0.48	20	0.2	4	0.41
4	001111	10	0.4	4	0.51	3	1.4	4.2	1.03	20	0.4	8	0.81
4	001111	10	0.8	8	0.95	3	1.8	5.4	1.28	20	0.6	12	1.1
4	001111	10	1	10	1.17	3	3.5	10.5	2.82	20	0.8	16	1.51
5	011111	10	0.2	2	0.7	3	0.7	2.1	1.4	20	0.2	4	0.975
5	011111	10	0.4	4	1.45	3	1.4	4.2	3.3	20	0.4	8	2.25
5	011111	10	0.8	8	2.5	3	1.8	5.4	4	20	0.6	12	3.65
5	011111	10	1	10	3.1	3	3.5	10.5	6.7	20	0.8	16	5.18
6	111111	10	0.2	2	1.75	3	0.7	2.1	4.25	20	0.2	4	2.315
6	111111	10	0.4	4	3.75	3	1.4	4.2	6.25	20	0.4	8	5
6	111111	10	0.8	8	7.5	3	1.8	5.4	7.87	20	0.6	12	7.6
6	111111	10	1	10	9.62	3	3.5	10.5	9.62	20	0.8	16	9.8

Working distance: 25 [mm]

Amplifier V_{in} : 15.1 [V]